

open fronted chilled self help • freestanding

Image: VOC900-GO



Image: SVOC900-GO



Stock Code	Overall Size mm	Weight kg	Wattage kw
VOC600-GO	600(w) x 750(d) x 1465(h)	135	1.5
VOC900-GO	900(w) x 750(d) x 1465(h)	180	2.3
VOC1200-GO	1200(w) x 750(d) x 1465(h)	230	2.3
VOC1500-GO	1500(w) x 770(d) x 1465(h)	280	2.5
VOC1800-GO	1800(w) x 770(d) x 1465(h)	330	2.8
VOC2100-GO	2100(w) x 770(d) x 1465(h)	380	2.8
VOC600-GC	600(w) x 750(d) x 1465(h)	135	3.0
VOC900-GC	900(w) x 750(d) x 1465(h)	180	3.0
VOC1200-GC	1200(w) x 750(d) x 1465(h)	230	3.0
VOC1500-GC	1500(w) x 770(d) x 1465(h)	280	2.5
VOC1800-GC	1800(w) x 770(d) x 1465(h)	330	2.8
VOC2100-GC	2100(w) x 770(d) x 1465(h)	380	2.8

Stock Code	Overall Size mm	Weight kg	Wattage kw
SVOC600-GO	600(w) x 750(d) x 1470(h)	141	1.5
SVOC900-GO	900(w) x 750(d) x 1470(h)	188	2.3
SVOC1200-GO	1200(w) x 750(d) x 1470(h)	240	2.3
SVOC1500-GO	1500(w) x 770(d) x 1470(h)	294	2.5
SVOC1800-GO	1800(w) x 770(d) x 1470(h)	346	2.8
SVOC2100-GO	2100(w) x 770(d) x 1470(h)	398	2.8
SVOC600-GC	600(w) x 750(d) x 1470(h)	141	1.5
SVOC900-GC	900(w) x 750(d) x 1470(h)	188	2.3
SVOC1200-GC	1200(w) x 750(d) x 1470(h)	240	2.3
SVOC1500-GC	1500(w) x 770(d) x 1470(h)	294	2.5
SVOC1800-GC	1800(w) x 770(d) x 1470(h)	346	2.8
SVOC2100-GC	2100(w) x 770(d) x 1470(h)	398	2.8

- These displays maintains pre-chilled food & drink at a regulated temperature of 0° - 5° degrees.
- Open fronted self help service, to four levels of display.
- Ideal for sandwiches, filled rolls, baguettes, salad, pasta, dairy products, cream cakes, smoothies, bottled, canned and carton drinks.
- Internal shelving adjustable in height and angle for improved product visibility.
- Low Energy LED illumination to all levels.
- UV bonded, toughened glass canopy and sneeze screen (Square profile).
- Zero Emission Eco Friendly Hydrocarbon Refrigeration housed within.
- Automatic condensate evaporator complete with ECO water level sensor.
- Reducing energy costs further with double glazed doors to rear as standard (GO). Cost saving mirror finished back panel option available (GC).
- Conforms to ISO 23953 standard, CE.
- 2 non-braked and 2 braked castor's below with foot option available.
- Curved profile design matches Counterlines Integrale & Da Vinci ranges of Patisseries, Dole Wells, Multidecks, Bain Maries and Hotplates.
- Square profile design matches Counterlines Manhattan range of Patisseries, Wells, Multidecks, Bain Maries and Hotplates.
- Allowing 24 hour operation.
- 3.5m supply lead with 13A plug as standard.

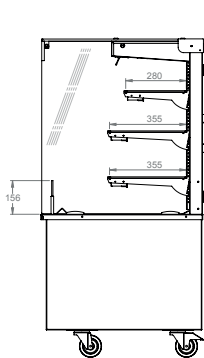
optional extras



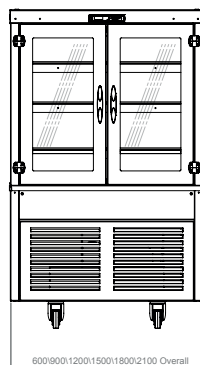
- Airflow direction kits.
- Security Features.
- Fascia panels.
- Point of Sale - Ticket Strip Holders.
- Wire impulse baskets.
- Custom specific branding & design adjustments.
- Castor Alternative (Height reducing feet).
- Control alternatives & monitoring system compatibility.
- Slimline Version (660mm) available upon request.

technical specifications

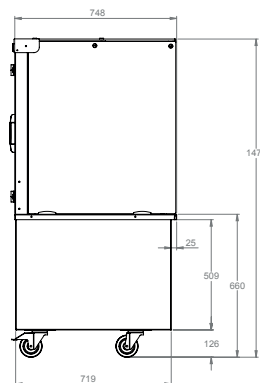
Square Form Factor



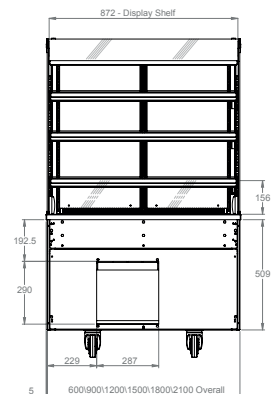
End Elevation



Rear Elevation

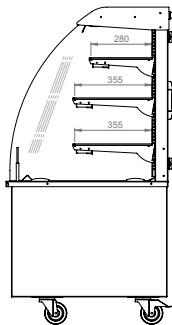


End Elevation

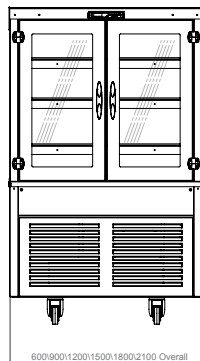


Front Elevation

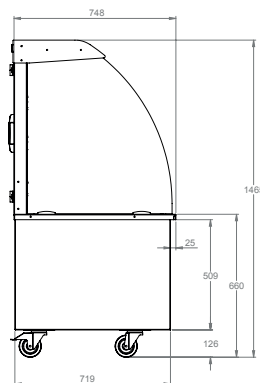
Curved Form Factor



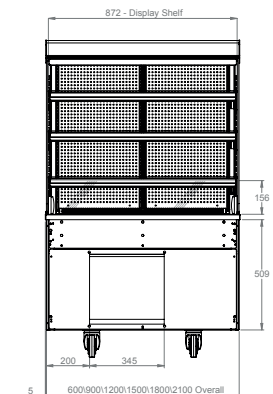
End Elevation



Rear Elevation



End Elevation



Front Elevation