

enclosed **heated** assisted service • drop-ins

Image: VHFDI900-GO



Image: SVHFDI900-GO



Stock Code	Overall Size	Weight	Wattage
	mm	kg	kw
VHFDI600-GO	600(w) x 750(d) x 826(h)	73	3.0
VHFDI900-GO	900(w) x 750(d) x 826(h)	87	3.0
VHFDI1200-GO	1200(w) x 750(d) x 826(h)	111	3.0

Stock Code	Overall Size	Weight	Wattage
	mm	kg	kw
SVHFDI600-GO	600(w) x 750(d) x 834(h)	79	3.0
SVHFDI900-GO	900(w) x 750(d) x 834(h)	95	3.0
SVHFDI1200-GO	1200(w) x 750(d) x 834(h)	121	3.0

- Fan-assisted technology with separate temperature controls for each level.
- This display maintains pre-cooked foods at a regulated temperature of 63° - 72° degrees.
- Closed front assisted service, to three levels of display.
- Ideal for Hot Wraps & Rolls, Soups, Porridge, Potted Noodle & Rice dishes, Pizzas, Chickens and Savouries.
- Internal shelving adjustable in height and angle for improved product visibility.
- Illumination to all levels.
- Toughened glass canopy and sneeze screen.
- Reducing energy costs further with double glazed doors to rear as standard.
- Curved profile design matches Counterlines Integrale & Da Vinci ranges of Patisseries, Dole Wells, Multidecks, Bain Maries and Hotplates.
- Square profile design matches Counterlines Manhattan range of Patisseries, Wells, Multidecks, Bain Maries and Hotplates.
- 3.5m supply lead with 13A plug as standard.

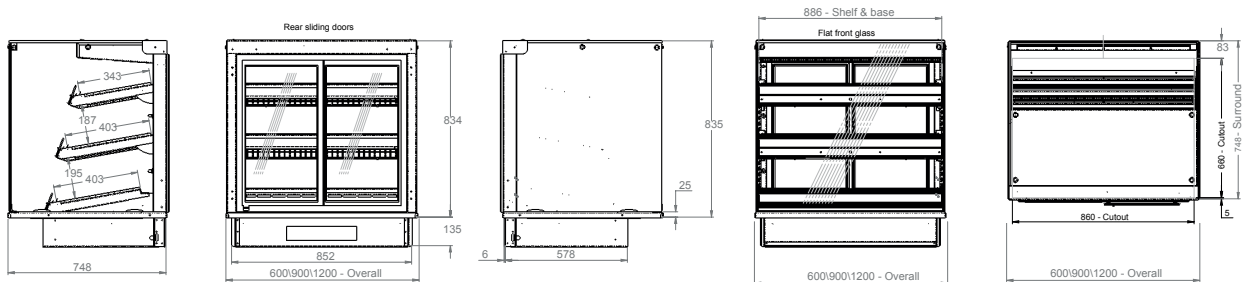
optional extras



- Security Features.
- Custom specific branding & design adjustments.
- Slimline Version available upon request.

technical specifications

Square Form Factor



End Elevation

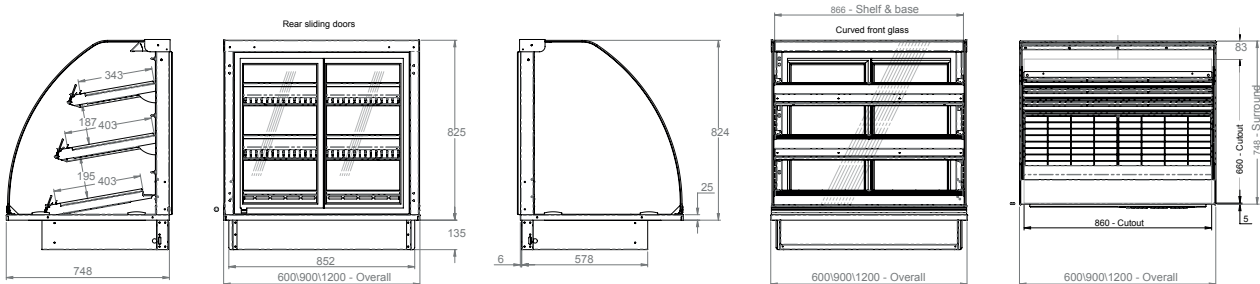
Rear Elevation

End Elevation

Front Elevation

Plan

Curved Form Factor



End Elevation

Rear Elevation

End Elevation

Front Elevation

Plan