

heated carvery • assisted service

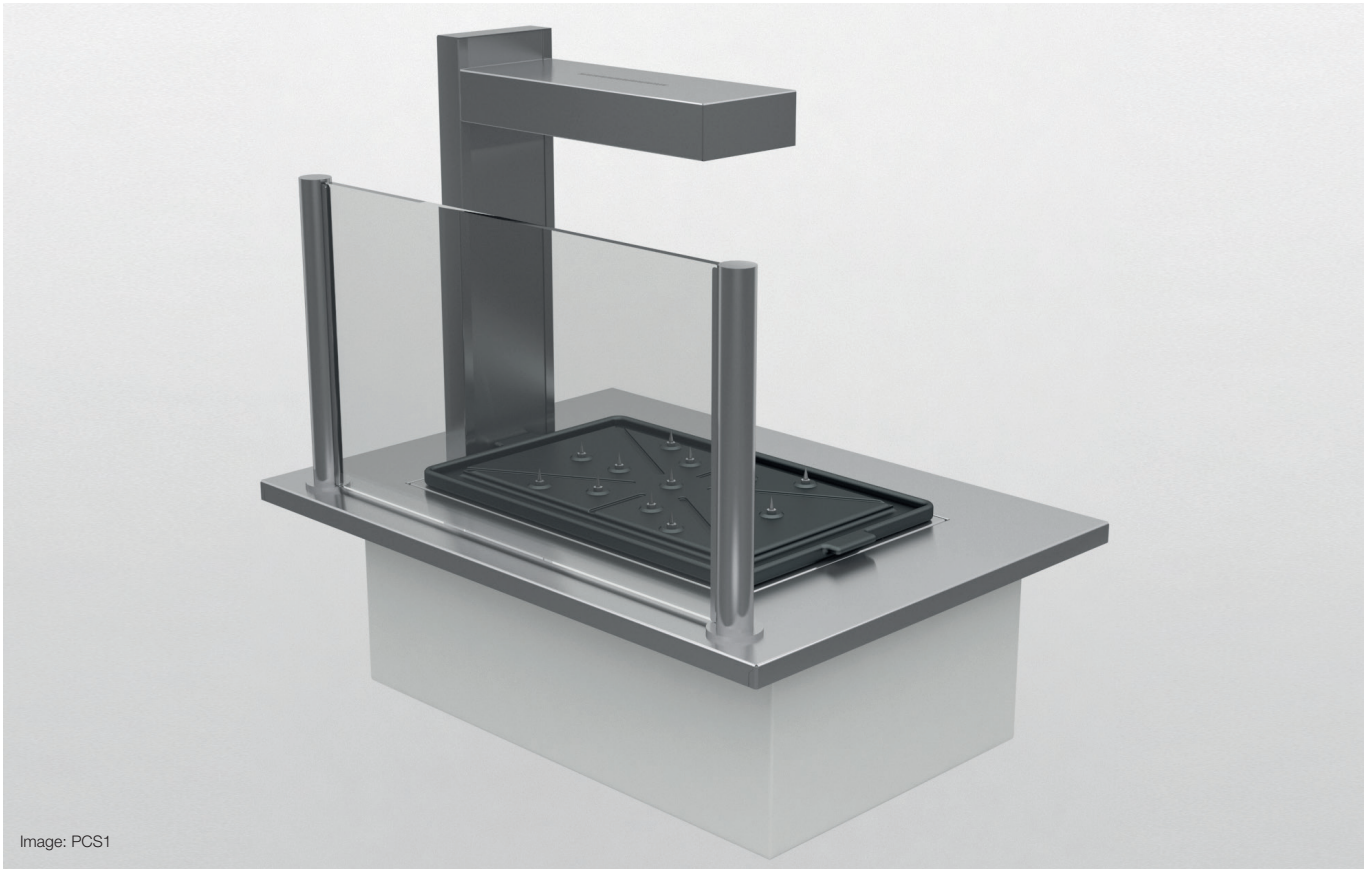


Image: PCS1

Stock Code	Capacity (gn)	Overall Size (mm)	Weight (kg)	Wattage (kw)
PCS1	1	825 x 600 x 560	39	1

- For theatre presentation of suitable sized portions of cooked food.
- Side gantry creates downward heat and illumination.
- Tall sneeze guard.
- Internal container accepting an enameled cast iron carvery pad with spikes.
- Adaptable for Bain Marie usage.

optional extras

- Ceramic Glass hotplate inserts 1/1 & 1/1+3.
- Gastronorm containers (variations of colours and depths).
- Modular Stainless steel base units.
- Custom specific branding & aesthetic design alterations.