

chilled deli • assisted service • night blind

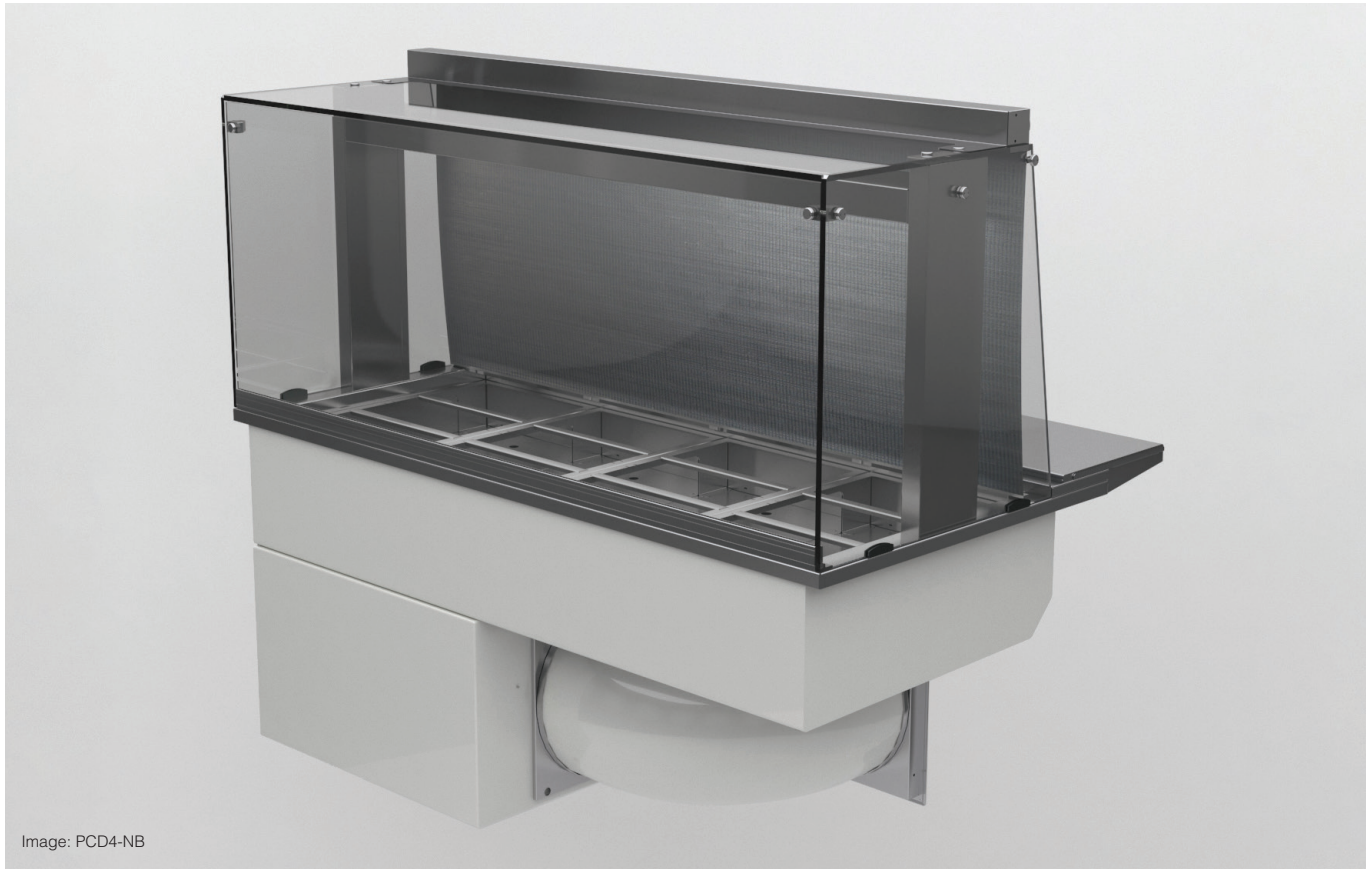


Image: PCD4-NB

Stock Code	Capacity (gn)	Overall Size (mm)	Weight (kg)	Wattage (kw)
PCD2-NB	2	825 x 936 x 560	112	1.4
PCD3-NB	3	1175 x 936 x 560	134	1.7
PCD4-NB	4	1525 x 936 x 560	165	1.9
PCD5-NB	5	1875 x 936 x 560	198	1.9
PCD6-NB	6	2225 x 936 x 560	213	2.2
<i>Wide Version - 1 & 1/3 gn capacity</i>				
PCWD2-NB	2	825 x 1083 x 560	127	1.4
PCWD3-NB	3	1175 x 1083 x 560	149	1.7
PCWD4-NB	4	1525 x 1083 x 560	180	1.9
PCWD5-NB	5	1875 x 1083 x 560	213	1.9
PCWD6-NB	6	2225 x 1083 x 560	228	2.2

- Perfect for assisted service offerings of chilled salads, rice, pasta dishes.
- Gentle flow of convected air maintains chilled food at safe regulated temperatures.
- Internal GN container holders will accept all variations from 1/9 through to full 1/1.
- Insulated material night-blind fitted as standard (night-blind adds additional 60mm to height).
- Built in rear shelf supporting quick food preparation.
- Removable polyethylene chopping boards (white) included as standard.
- Flexible rear ventilation fan & ducting assembly included.

optional extras

- Fixed position clear glass mid shelf for ambient products.
- Gastronorm containers (variations of colours and depths).
- Modular stainless steel base units.
- Custom specific branding & aesthetic design alterations.
- Compatible monitoring control systems. (RDM, CDK, Carel).

For more information on this product, please contact a member of our sales team:
 email: enquiries@counterline.co.uk • Tel: + 44 (0) 151 548 2211 • Fax: + 44 (0) 151 549 2179
 Or visit our website: www.counterline.co.uk