

chilled deli • self help • fixed back

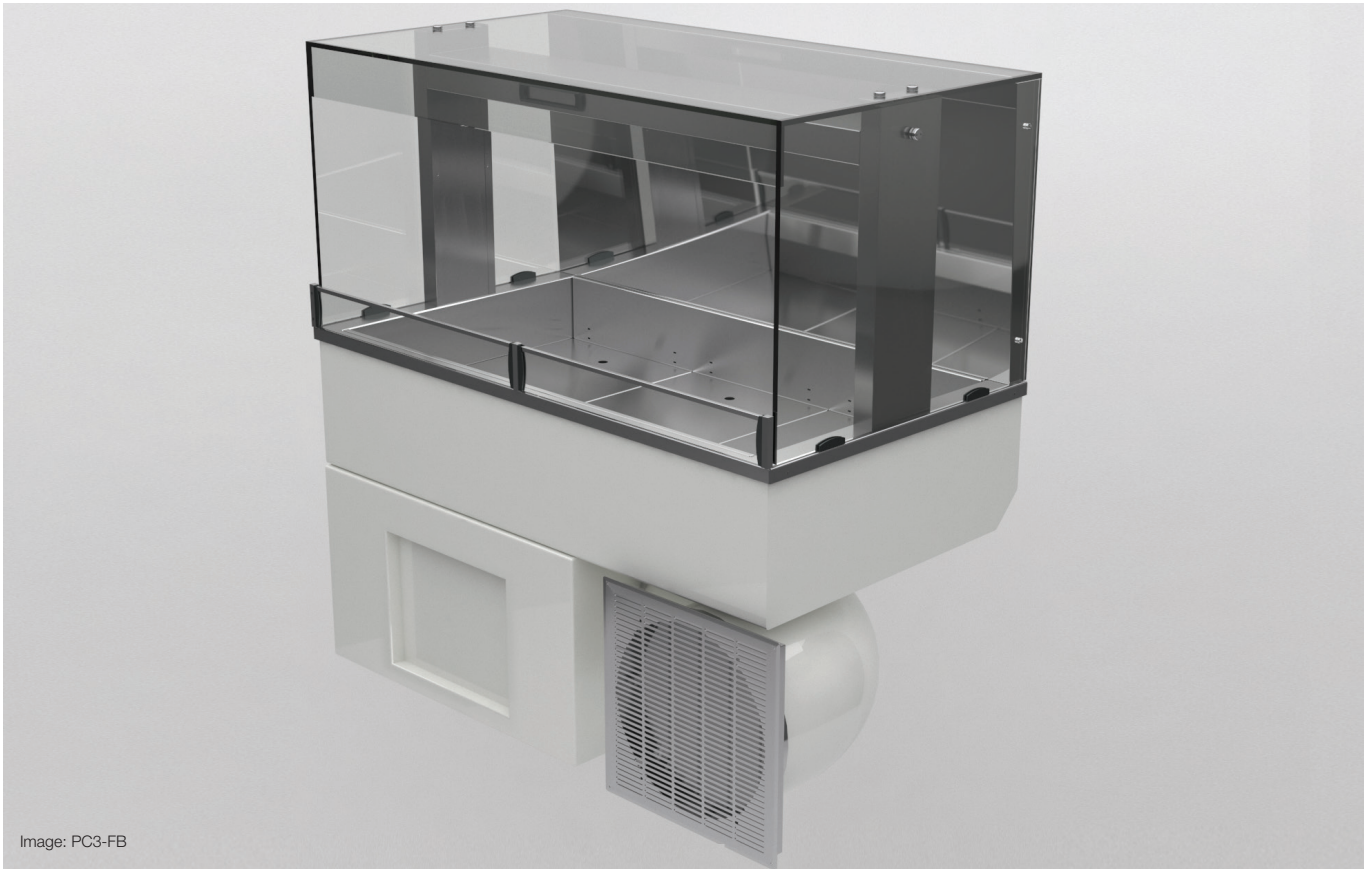


Image: PC3-FB

Stock Code	Capacity (gn)	Overall Size (mm)	Weight (kg)	Wattage (kw)
PC2-FB	2	825 x 660 x 560	128	1.4
PC3-FB	3	1175 x 660 x 560	140	1.7
PC4-FB	4	1525 x 660 x 560	171	1.9
PC5-FB	5	1875 x 660 x 560	204	1.9
PC6-FB	6	2225 x 660 x 560	219	2.2
<i>Wide Version - 1 & 1/3 gn capacity</i>				
PCW2-FB	2	825 x 810 x 560	133	1.4
PCW3-FB	3	1175 x 810 x 560	155	1.7
PCW4-FB	4	1525 x 810 x 560	186	1.9
PCW5-FB	5	1875 x 810 x 560	219	1.9
PCW6-FB	6	2225 x 810 x 560	234	2.2

- Ideal for self-help service for chilled portions of salads, rice, pasta dishes.
- Larger food offerings the units can be placed back to back.
- Gentle flow of convected air maintains chilled food at safe regulated temperatures.
- Internal GN container holders will accept all variations from 1/9 through to full 1/1.
- Product reflecting rear wall fitted as standard.
- Flexible front ventilation fan & ducting assembly included.

optional extras

- Fixed position clear glass mid shelf for ambient products.
- Gastronorm containers (variations of colours and depths).
- Modular stainless steel base units.
- Custom specific branding & aesthetic design alterations.
- Compatible monitoring control systems. (RDM, CDK, Carel).