

manhattan • chilled display island well



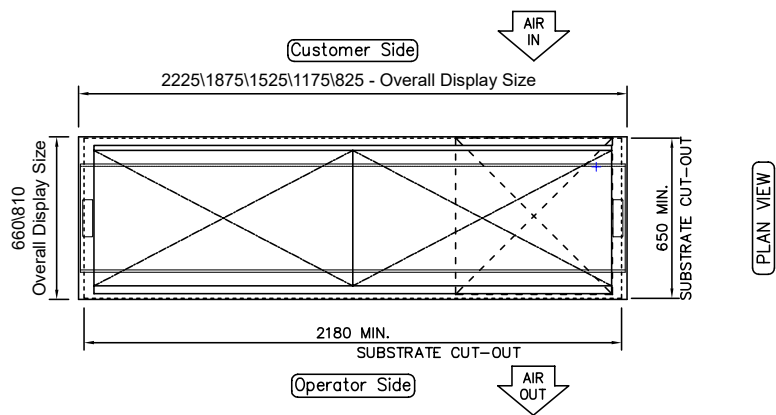
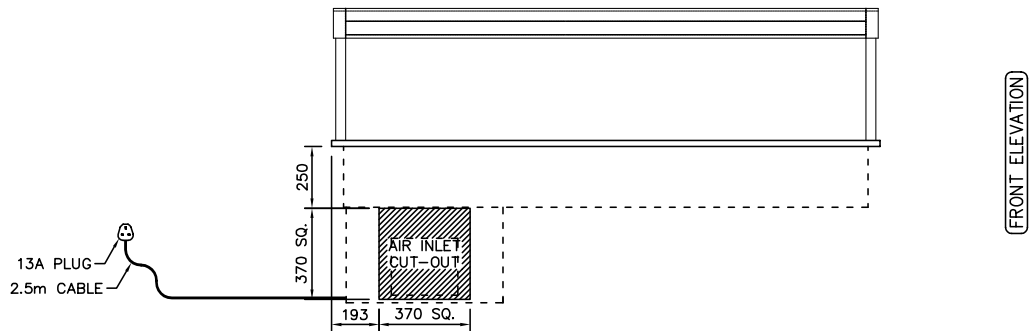
Image: MCIW4-GO



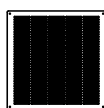
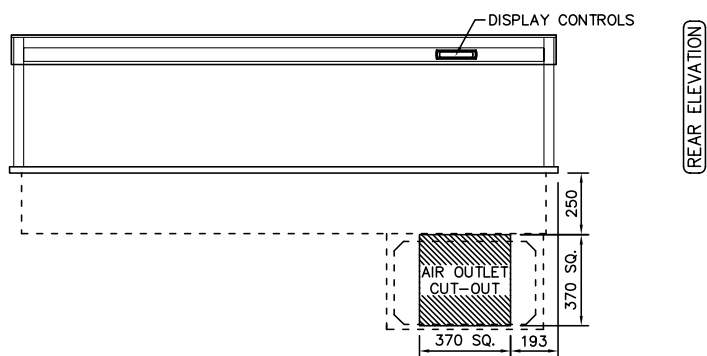
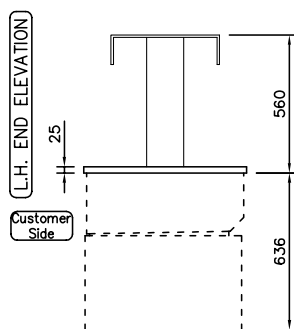
Stock Code	Capacity (gn)	Overall Size (mm)	Weight (kg)	Wattage (kw)
Chilled Island Well				
MCIW2-GO	2/1	825 x 660 x 560h	103	1.4
MCIW3-GO	3/1	1175 x 660 x 560h	120	1.7
MCIW4-GO	4/1	1525 x 660 x 560h	133	1.7
MCIW5-GO	5/1	1875 x 660 x 560h	147	1.7
MCIW6-GO	6/1	2225 x 660 x 560h	160	2.2
Chilled Wide Island Well				
MCWIW3-GO	3/1	1175 x 810 x 560h	140	1.7
MCWIW4-GO	4/1	1525 x 810 x 560h	160	1.9
MCWIW5-GO	5/1	1875 x 810 x 560h	180	1.9
MCWIW6-GO	6/1	2225 x 810 x 560h	200	2.2

- Flat bed chilled deck, which is perfect for the display of salads, drinks and fruit.
- Gentle flow of convected air maintains pre-chilled food at a safe regulated temperature.
- The angle of the display deck can be adjusted for enhanced presentation.
- Double-sided sneeze guard that can be accessed from both sides.
- A wide version is also available, which increases the depth to 810mm.
- Gantry mounted controller installed on operators side (GO) as standard.
- The gantry controller can be installed on customer side (GC) on request.
- A wide range of optional extras are available for this display.

technical specifications



NOTE:
 IF DISPLAY IS TO BE FLUSH
 MOUNTED INTO WORKTOP,
 ADD 4 - 6mm TO DISPLAY
 SIZES FOR WORKTOP CUT-OUT



CUSTOMER & OPERATOR SIDE FASCIA
 PANELS MUST BE REMOVABLE FOR
 MAINTENANCE ACCESS

SUPPLIED WITH 400mm SQ. STAINLESS
 STEEL AIR INLET/OUTLET GRILLES