



counterline 
setting the standard



countertops

part of the idesign range

countertops

The perfect solution for:

Primary Schools • Secondary Schools • Colleges • Universities • Hospitals • Contract Caterers

counterline 
setting the standard

contents

contents & introduction 02

Introduction to the Countertop range

new designs & innovation 03

Overview of our fan assisted Countertop units

integrale countertops 04-05

A range of heated, chilled and ambient Countertop units

manhattan countertops 06-07

A range of heated, chilled and ambient Countertop units

da vinci countertops 08-09

A range of heated, chilled and ambient Countertop units

vision aire fan assisted countertops 10-15

Introduction to our vision aire fan assisted Countertop units

vision aire heated countertops 16-17

A range of heated Countertop units

vision aire chilled countertops 18-19

A range of chilled Countertop units


vision aire ambient countertops 20-21

A range of ambient Countertop units

vision aire countertops 22-23

Heated, warmed & ambient Countertop units

icon guide



heated display



chilled display




ambient display



13 amp (plug & play)



eco friendly



fan assisted

As a market leader in heated chilled and ambient displays Counterline understands the requirements from its customers to sell and promote their products.

Counterline offers a range of stylish food and drink display alternatives which help increase sales in the fast food industry.

Our countertops provide you with an important place in the market with versatility being key. Choices include **heated**, **chilled**, ambient, square glass and curved glass, with options of assisted serve or self-serve. Countertops will help give you all you need to maximize sales in a competitive industry.

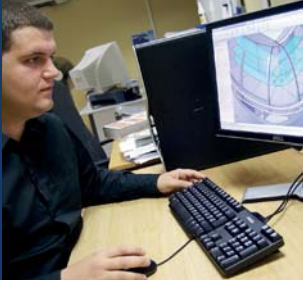
Choose from any one of our four distinctive styles; **integrale**, **manhattan**, **da vinci** and **vision aire**. Our heated Bain Marie and Ceramic glass hotplates offer the industry a stylish look that your front of house deserves. Gastronorm compatible and easy to move makes these ideal for Schools, Hotels, Universities and much more.

Counterline's exclusive styling and advanced technical features come as standard.

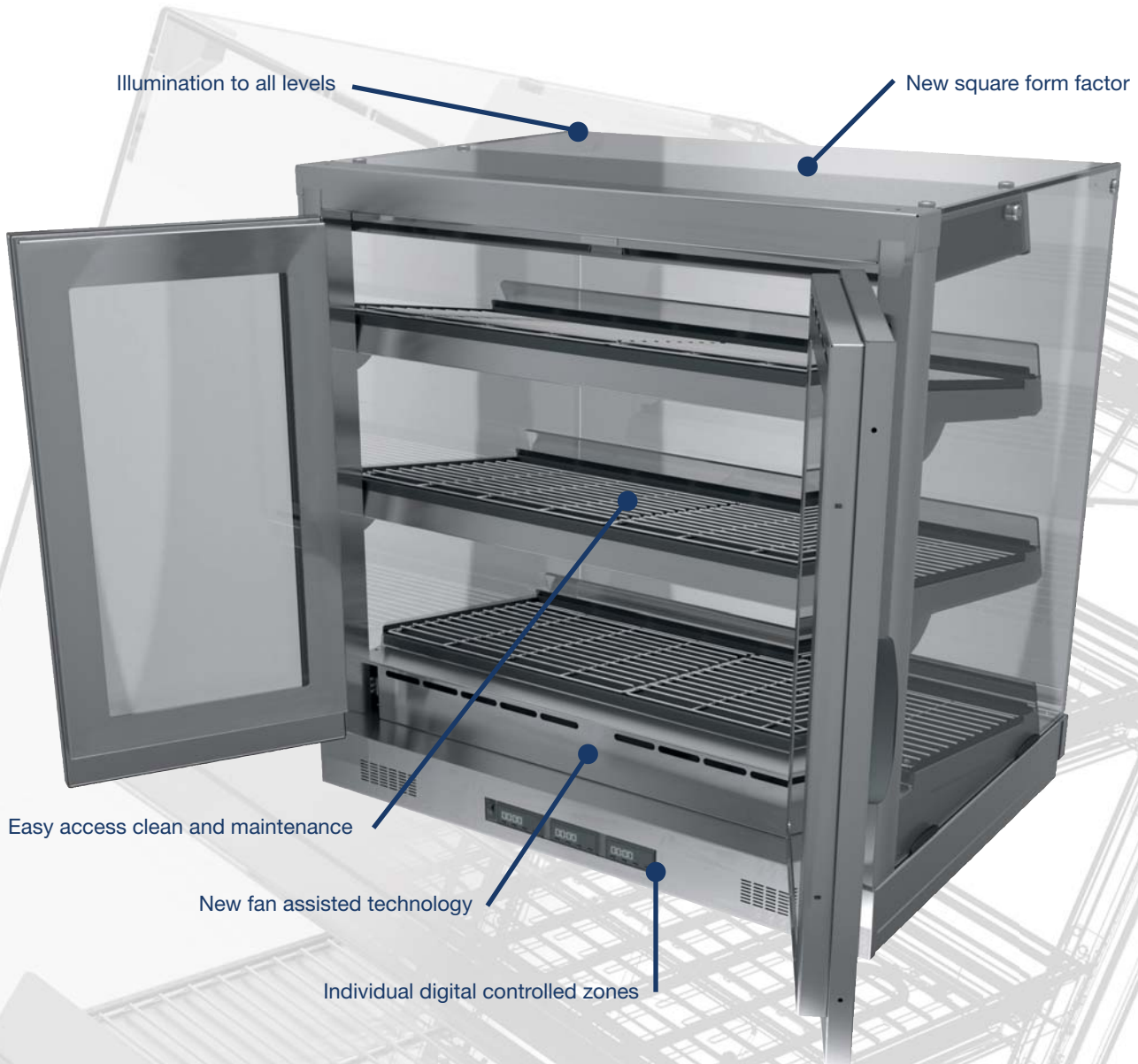
"All our countertop units are designed to be easy to use, clean and maintain."

"You also have a simple plug & play solution with power being supplied by a standard 13 amp plug."





new designs & innovation



SVHFCT900 • (Rear View)

A new generation in heating innovation has arrived from Counterline reducing our customer's energy costs by up to 35%. Our award winning 'fan assisted' technology has improved product quality with the added reduction in power consumption. With individual digital controlled zones all from one control system also helps towards reducing the carbon footprint.

The new gentle heat source keeps bread products such as breakfast baps, pizzas and hot sandwiches, fresher for much longer while maintaining temperature and quality.

This reduces product waste and the opportunity for the customer to display offers for longer periods than ever before.

The introduction of Soups, Porridge and Noodles demonstrates the flexibility a 'fan assisted' display can offer you.





IHCTBM2



heated bain marie

IHCTBM3



IHCTBM4



'integrale is sure to catch the eye of today's interior designer, as the specification ensures that the range offers exceptional value for money'.



Stock Code	Overall Size mm	Weight kg	Wattage kw	List Price (£)
IHCTBM2	825(w) x 676(d) x 632(h)	30	1.0	1860
IHCTBM3	1175(w) x 676(d) x 632(h)	40	1.5	2080
IHCTBM4	1525(w) x 676(d) x 632(h)	51	1.9	2300

integrale countertops

heated ceramic glass hotplate

The integrale displays feature satin and brightly polished stainless steel with multi-layered chromium plating and curved toughened glass. The vertical gantry arms give the range a simplistic but effective visual appearance.

If you're looking for a reliable and stylish display, which offers excellent value for money then integrale is the perfect solution.

IHCTCGH2



IHCTCGH3

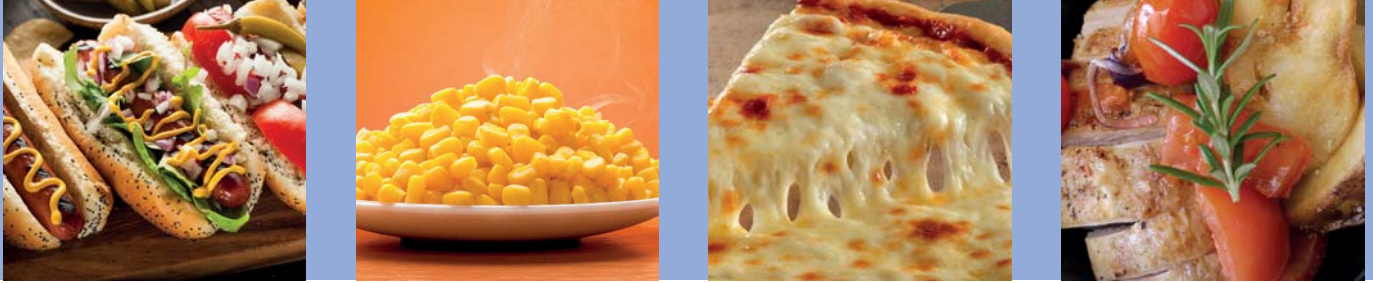


IHCTCGH4



Stock Code	Overall Size mm	Weight kg	Wattage kw	List Price (£)
IHCTCGH2	825(w) x 676(d) x 632(h)	34	1.0	2205
IHCTCGH3	1175(w) x 676(d) x 632(h)	44	1.5	2460
IHCTCGH4	1525(w) x 676(d) x 632(h)	55	1.9	2735





MHCTBM2



heated bain marie

MHCTBM3



The manhattan range live up to their name.

With their uncompromisingly art deco inspired rectilinear design elements, the stunning displays mirror the famous manhattan skyline.

MHCTBM4



Stock Code	Overall Size mm	Weight kg	Wattage kw	List Price (£)
MHCTBM2	825(w) x 676(d) x 655(h)	30	1.0	2005
MHCTBM3	1175(w) x 676(d) x 655(h)	40	1.5	2255
MHCTBM4	1525(w) x 676(d) x 655(h)	51	1.9	2430



manhattan countertops

heated ceramic glass hotplate

The combination of satin and brightly polished stainless steel with the finely polished edges of bonded 10mm flat glass give the unit a timeless elegance based on simplicity and purity of design.

The manhattan range appeals to customers and clients by offering a more contemporary and minimalist appearance.

MHCTCGH2



MHCTCGH3



MHCTCGH4



Stock Code	Overall Size mm	Weight kg	Wattage kw	List Price (£)
MHCTCGH2	825(w) x 676(d) x 655(h)	34	1.0	2305
MHCTCGH3	1175(w) x 676(d) x 655(h)	44	1.5	2585
MHCTCGH4	1525(w) x 676(d) x 655(h)	55	1.9	2860





DHCTBM2



DHCTBM3



DHCTBM4



heated bain marie

'Beautifully sculpted and superbly engineered, the da vinci range is a work of art in itself'.



Stock Code	Overall Size mm	Weight kg	Wattage kw	List Price (£)
DHCTBM2	825(w) x 676(d) x 704(h)	30	1.0	2130
DHCTBM3	1175(w) x 676(d) x 704(h)	40	1.5	2395
DHCTBM4	1525(w) x 676(d) x 704(h)	51	1.9	2690

heated ceramic glass hotplate

The range combines satin and brightly polished stainless steel, multi layer chromium plating, finely polished curved glass edges and subtly textured epoxy paint.

The glass curvature is also reflected in da vinci's gently arcing supports and elliptical lighting duct.

The result is a Countertop display range that gives you the best of both worlds - stylish good looks together with an unbeatable performance.

DHCTCGH2



DHCTCGH3



DHCTCGH4



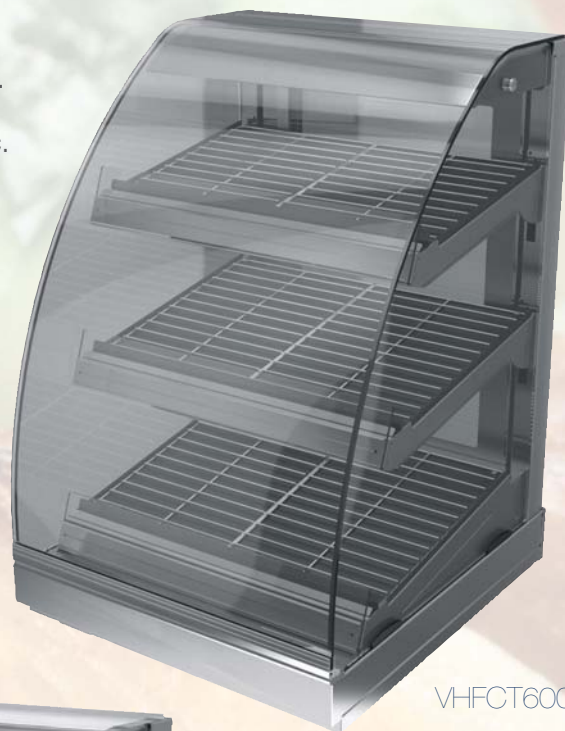
Stock Code	Overall Size mm	Weight kg	Wattage kw	List Price (£)
DHCTCGH2	825(w) x 676(d) x 704(h)	34	1.0	2445
DHCTCGH3	1175(w) x 676(d) x 704(h)	44	1.5	2750
DHCTCGH4	1525(w) x 676(d) x 704(h)	55	1.9	3130



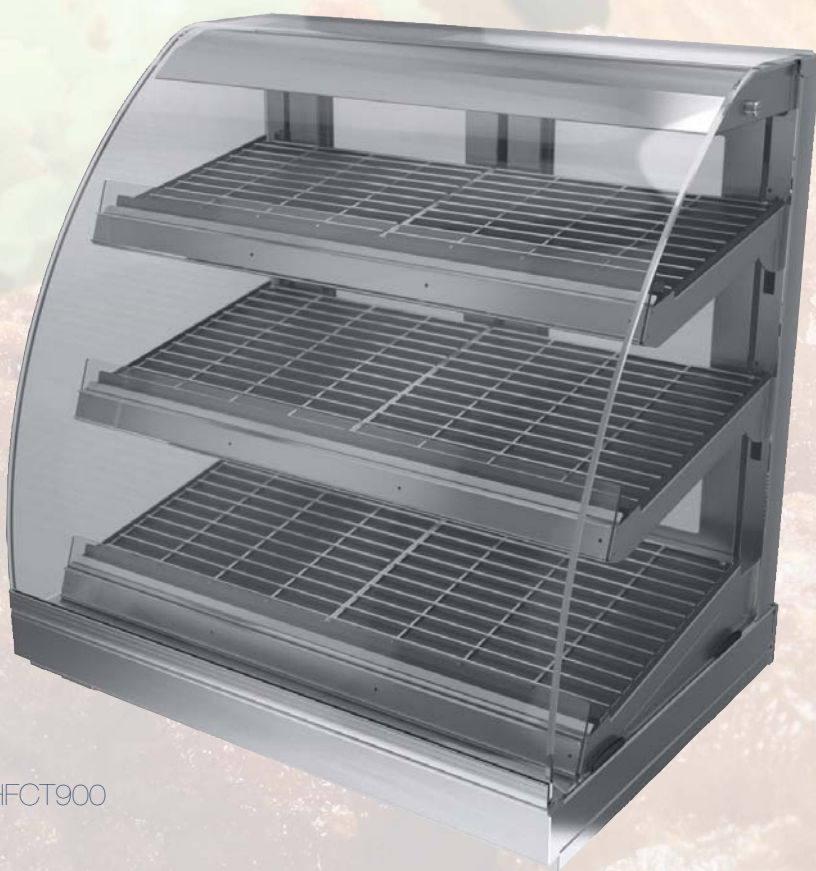


curved **heated** countertop for **assisted** service

- Heated countertop food display for assisted service.
- Ideal for hot rolls, pies, pasties, chicken portions etc.
- Full height glass to front of display.
- Illumination and heating to all display levels.
- Produce displayed on two removable stainless steel shelves and one fixed base.
- Hinged rear glass door/s to retain heat.
- Easily dismantled for cleaning.



VHFCT600



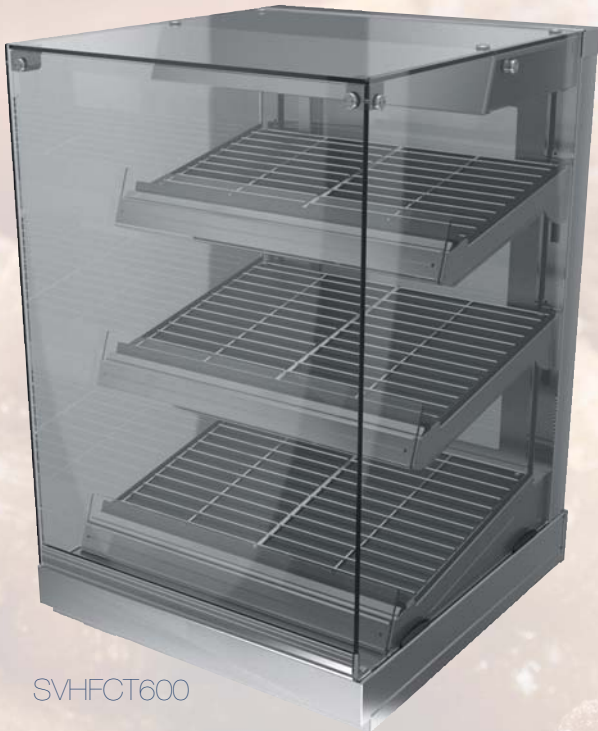
VHFCT900

Stock Code	Overall Size mm	Weight kg	Wattage kw	List Price (£)
VHFCT600	600(w) x 666(d) x 909(h)	67	3.0	3715
VHFCT900	900(w) x 666(d) x 909(h)	88	3.0	4190

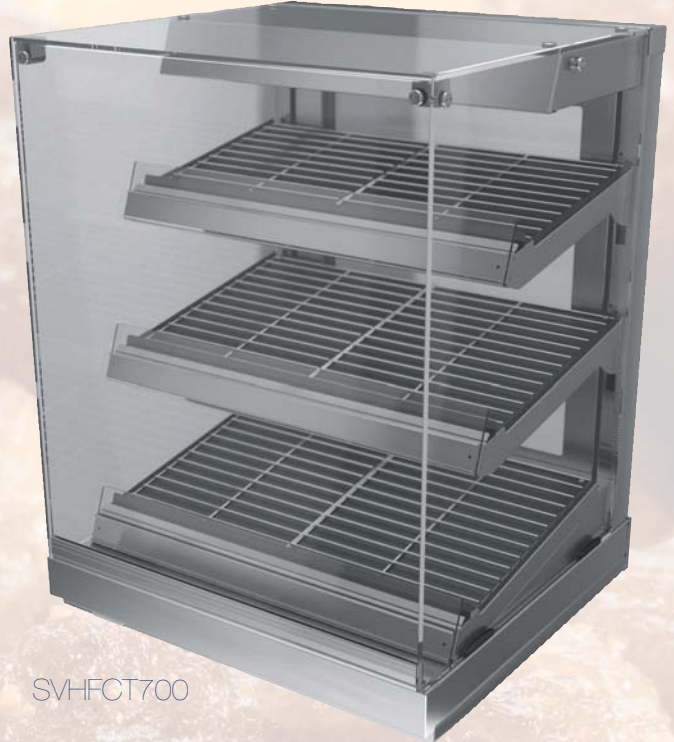


vision aire fan assisted countertops

square **heated** countertop for **assisted** service



SVHFCT600



SVHFCT700

- Heated countertop food display for assisted service.
- Ideal for hot rolls, pies, pasties, chicken portions etc.
- Full height glass to front of display.
- Illumination and heating to all display levels.
- Produce displayed on two removable stainless steel shelves and one fixed base.
- Hinged rear glass door/s to retain heat.
- Easily dismantled for cleaning.



SVHFCT900

Stock Code	Overall Size mm	Weight kg	Wattage kw	List Price (£)
SVHFCT600	600(w) x 666(d) x 918(h)	67	3.0	3810
SVHFCT700	700(w) x 666(d) x 918(h)	75	3.0	4040
SVHFCT900	900(w) x 666(d) x 918(h)	88	3.0	4290





Solutions for all your food & drink displays.

counterline 
setting the standard

*“Counterline’s exclusive styling
and advanced technical features
come as standard.”*



- heated
- chilled
- ambient

vision aire countertops

model illustrated: VOCCT2

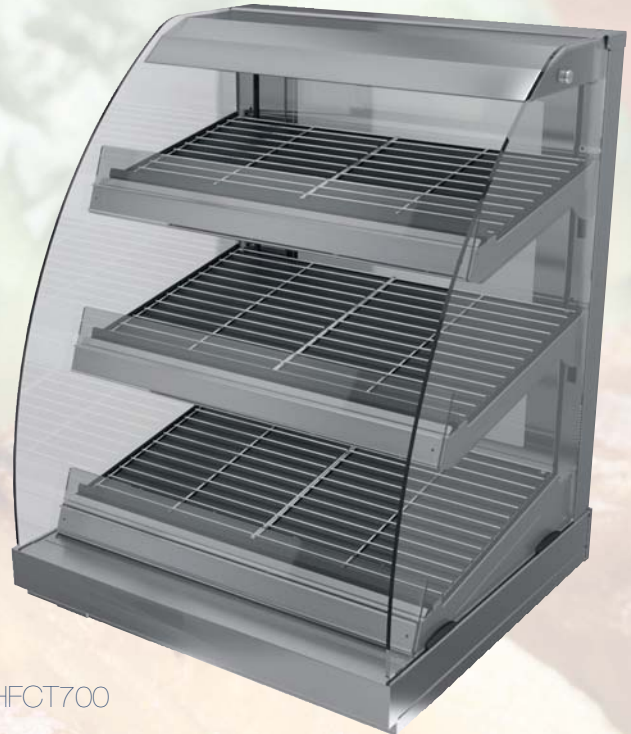




curved **heated** countertop for self help service



VOHFCT600



VOHFCT700



VOHFCT600-FB



VOHFCT700-FB

Stock Code	Overall Size mm	Weight kg	Wattage kw	List Price (£)
VOHFCT600	600(w) x 666(d) x 909(h)	67	3.0	3555
VOHFCT700	700(w) x 666(d) x 909(h)	75	3.0	3785
VOHFCT600-FB	600(w) x 666(d) x 909(h)	67	3.0	3415
VOHFCT700-FB	700(w) x 666(d) x 909(h)	75	3.0	3615

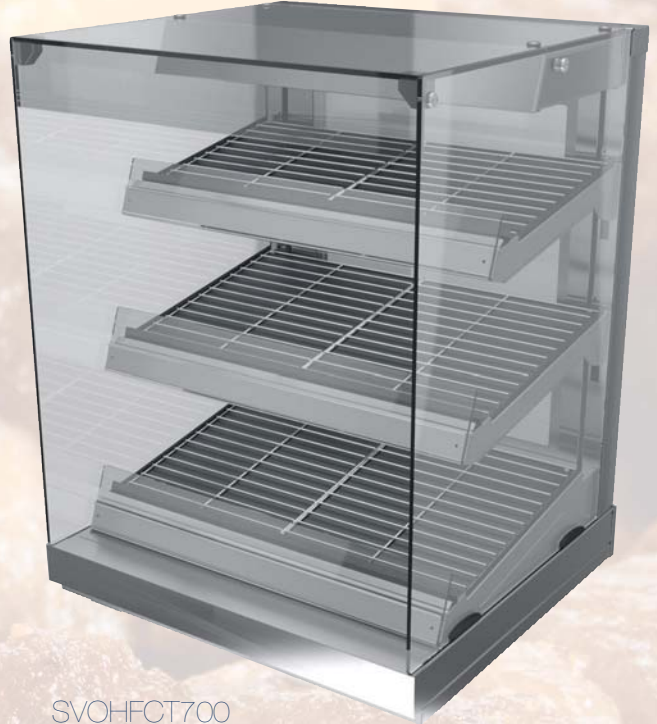


vision aire fan assisted countertops

square **heated** countertop for **self help** service



SVOHFCT600



SVOHFCT700



SVOHFCT600-FB



SVOHFCT700-FB

Stock Code	Overall Size mm	Weight kg	Wattage kw	List Price (£)
SVOHFCT600	600(w) x 666(d) x 918(h)	67	3.0	3735
SVOHFCT700	700(w) x 666(d) x 918(h)	75	3.0	4045
SVOHFCT600-FB	600(w) x 666(d) x 918(h)	67	3.0	3590
SVOHFCT700-FB	700(w) x 666(d) x 918(h)	75	3.0	3885





curved **heated** countertop for self help service

- Heated countertop food display for self help service.
- Ideal for hot rolls, pies, pasties, chicken portions etc.
- Customer access via three hinged acrylic flaps.
- Illumination and heating to all display levels.
- Produce displayed on two removable stainless steel shelves.
- Sliding rear glass doors.
- Produce displayed in two or three 1/1 containers. Available as optional extra.
- Easily dismantled for cleaning.



VOHCT2



VOHCT3

A wide range of optional extras are available.
Contact us for further details.

Stock Code	Overall Size mm	Weight kg	Wattage kw	List Price (£)
VOHCT2	825(w) x 660(d) x 627(h)	60	1.1	1925
VOHCT3	1175(w) x 660(d) x 627(h)	70	1.1	2200



vision aire countertops

curved **heated** countertop for assisted service

- Fully enclosed heated countertop food display for assisted service.
- Full height glass to front of display.
- Ideal for hot rolls, pies, pasties, chicken portions etc.
- Illumination and heating to all display levels.
- Produce displayed on two removable stainless steel shelves.
- Produce displayed in two or three 1/1 containers, available as optional extra.
- Sliding rear glass doors to retain heat.
- Easily dismantled for cleaning.



VHCT2

Stock Code	Overall Size mm	Weight kg	Wattage kw	List Price (£)
VHCT2	825(w) x 660(d) x 627(h)	60	1.1	1795
VHCT3	1175(w) x 660(d) x 627(h)	70	1.1	2005

square **heated** countertop for assisted service

NEW

Due to popular demand we now offer our entire vision aire range in a new attractive and exciting square form factor.

- Fully enclosed heated countertop food display for assisted service.
- Full height glass to front of display.
- Ideal for hot rolls, pies, pasties, chicken portions etc.
- Illumination and heating to all display levels.
- Produce displayed on two removable stainless steel shelves.
- Sliding rear glass doors to retain heat.
- Easily dismantled for cleaning.



SVHCT2

Stock Code	Overall Size mm	Weight kg	Wattage kw	List Price (£)
SVHCT2	825(w) x 660(d) x 627(h)	60	1.1	1955
SVHCT3	1175(w) x 660(d) x 627(h)	70	1.1	2180





curved **chilled** countertop for self help service

- Chilled countertop food display for self help service.
- Ideal for sandwiches, filled rolls, dairy products, drinks etc.
- Customer access via three hinged acrylic flaps.
- Illumination to all display levels.
- Produce displayed on two removable glass shelves and base level.
- Sliding double glazed rear doors.
- Automatic condensate evaporation.
- Integral condensing unit with fan blown refrigeration system.



VOCCT2



A wide range of optional extras are available.
Contact us for further details.



Stock Code	Overall Size mm	Weight kg	Wattage kw	List Price (£)
VOCCT2	825(w) x 740(d) x 627(h)	76	1.1	2805
VOCCT3	1175(w) x 740(d) x 627(h)	86	1.5	3165

vision aire countertops

curved chilled countertop for assisted service

- Fully enclosed chilled countertop food display for assisted service.
- Full height glass to front of display.
- Ideal for sandwiches, filled rolls, dairy products, drinks etc.
- Illumination to all display levels.
- Produce displayed on removable glass shelf and base level.
- Integral condensing unit with fan blown refrigeration system.
- Sliding double glazed rear doors.
- Automatic condensate evaporation.



VCCT2

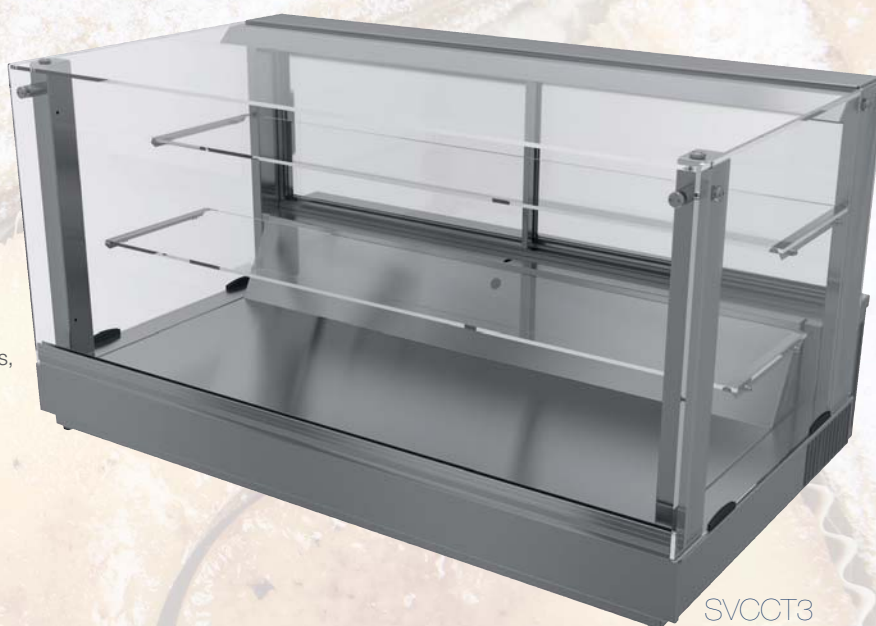
Stock Code	Overall Size	Weight	Wattage	List Price
	mm	kg	kw	(£)
VCCT2	825(w) x 740(d) x 627(h)	76	1.1	2705
VCCT3	1175(w) x 740(d) x 627(h)	86	1.5	3005

square chilled countertop for assisted service

NEW

Due to popular demand we now offer our entire vision aire range in a new attractive and exciting square form factor.

- Fully enclosed chilled countertop food display for assisted service.
- Full height glass to front of display.
- Ideal for sandwiches, filled rolls, dairy products, drinks etc.
- Illumination to all display levels.
- Produce displayed on removable glass shelf and base level.
- Integral condensing unit with fan blown refrigeration system.
- Sliding double glazed rear doors.
- Automatic condensate evaporation.



SVCOCT3

Stock Code	Overall Size	Weight	Wattage	List Price
	mm	kg	kw	(£)
SVCCT2	825(w) x 740(d) x 627(h)	76	1.1	2895
SVCCT3	1175(w) x 740(d) x 627(h)	86	1.5	3160





curved ambient countertop for self help service

- Ambient countertop food display for self help service.
- Ideal for confectionery, crisps, fruit etc.
- Customer access via three hinged acrylic flaps.
- Produce displayed on two removable glass shelves and base level.
- Illumination to all display levels.
- Fixed back as standard.
Rear doors not available for this display.



VOACT2

VOACT3



A wide range of optional extras are available.
Contact us for further details.



Stock Code	Overall Size mm	Weight kg	Wattage kw	List Price (£)
VOACT2	825(w) x 660(d) x 627(h)	60	0.3	1470
VOACT3	1175(w) x 660(d) x 627(h)	70	0.3	1680

vision aire countertops

curved ambient countertop for assisted service

- Ambient countertop food display for assisted service.
- Full height glass to front of display.
- Ideal for confectionery, crisps, fruit etc.
- Produce displayed on two removable glass shelves and base level.
- Illumination to all display levels.
- Open back as standard.
Rear doors not available for this display.



VACT2

Stock Code	Overall Size mm	Weight kg	Wattage kw	List Price (£)
VACT2	825(w) x 660(d) x 627(h)	63	0.3	1405
VACT3	1175(w) x 660(d) x 627(h)	73	0.3	1455

square ambient countertop for assisted service

NEW

Due to popular demand we now offer our entire vision aire range in a new attractive and exciting square form factor.

- Ambient countertop food display for assisted service.
- Full height glass to front of display.
- Ideal for confectionery, crisps, fruit etc.
- Illumination to all display levels.
- Produce displayed on two removable glass shelves and base level.
- Illumination to all display levels.
- Open back as standard.
Rear doors not available for this display.



SVACT2

Stock Code	Overall Size mm	Weight kg	Wattage kw	List Price (£)
SVACT2	825(w) x 660(d) x 627(h)	63	0.3	1430
SVACT3	1175(w) x 660(d) x 627(h)	73	0.3	1480





heated buffet countertop for self help service



Stock Code	Overall Size mm	Weight kg	Wattage kw	List Price (£)
V10HCT660	662(w) x 502(d) x 627(h)	40	0.7	1580

- Perfect for presenting scrambled eggs and bacon.
- Maintains pre-heated, cooked food at a regulated temperature.
- Factory set controls maintain food between 65°C and 70°C.
- General construction from 430 satin polished stainless steel.
- Fixed back unit with 2 front flaps for self service.
- Fluorescent lights to both levels.
- Includes water container for humidification.
- Unit supplied with 13amp plug and 1.5m supply lead.
- One shelf and base each accepting 2 1/2 gn containers 65mm deep.
- Gastronorm containers sold separately.
- A wide range of optional extras are available.

warmer buffet countertop for self help service



Stock Code	Overall Size mm	Weight kg	Wattage kw	List Price (£)
V10WCT520	520(w) x 502(d) x 627(h)	35	0.3	1460
V10WCT660	660(w) x 502(d) x 627(h)	40	0.3	1480

- Perfect for maintaining pre-warmed pastries, croissants, etc.
- Factory set controls.
- Factory set controls maintain food between 65°C and 70°C.
- General construction from 430 satin polished stainless steel.
- Fixed back unit with 2 front flaps for self service.
- Fluorescent lights to both levels.
- Heated perforated base and ambient perforated shelf.
- Includes water container for humidification.
- Unit supplied with 13amp plug and 1.5m supply lead.

ambient buffet countertop for self help service



Stock Code	Overall Size mm	Weight kg	Wattage kw	List Price (£)
V10AT380	360(w) x 502(d) x 627(h)	20	0.0	850
V10AT660	660(w) x 502(d) x 627(h)	25	0.0	895

- Ambient display perfect for pastries, fruit, confectionery and bread.
- General construction from 430 satin polished stainless steel.
- Fixed back unit with 2 front flaps for self service.
- Stainless steel base and perspex shelf.



vision aire countertops

heated baking & display oven - front loading model (back bar location)



Stock Code	Overall Size mm	Weight kg	Wattage kw	List Price (£)
------------	-----------------	-----------	------------	----------------

VBOF	551(w) x 560(d) x 625(h)	40	3.0	1985
------	--------------------------	----	-----	------

- Front loading unit designed to bake and display jacket potatoes.
- Unit can also be used for baking and displaying pizzas, baguettes etc.
- Fan assisted convection cooking.
- Audible timer for up to 120 minutes.
- 240° Maximum temperature with neon indicator.
- Oven capacity will see 60 8oz (226g) jacket potatoes cooked in under an hour.
- 3 Removable wire shelves.
- Large heated top display section for maximum visibility and a self supporting top display glass door allowing maximum access to cooked products.
- Oven capacity (based on 226/283g potatoes): Main display 60/50 potatoes, display area 50/40 potatoes.
- Personalised branding available as an optional extra.

heated baking & display oven - rear loading model (front bar location)



Stock Code	Overall Size mm	Weight kg	Wattage kw	List Price (£)
------------	-----------------	-----------	------------	----------------

VBOR	551(w) x 560(d) x 625(h)	40	3.0	1985
------	--------------------------	----	-----	------

- Rear loading unit designed to bake and display jacket potatoes.
- Unit can also be used for baking and displaying pizzas, baguettes etc.
- Fan assisted convection cooking.
- Audible timer for up to 120 minutes.
- 240° Maximum temperature with neon indicator.
- Oven capacity will see 60 8oz (226g) jacket potatoes cooked in under an hour.
- 3 Removable wire shelves.
- Large heated top display section for maximum visibility and a self supporting top display glass door allowing maximum access to cooked products.
- Oven capacity (based on 226/283g potatoes): Main display 60/50 potatoes, display area 50/40 potatoes.
- Personalised branding available as an optional extra.

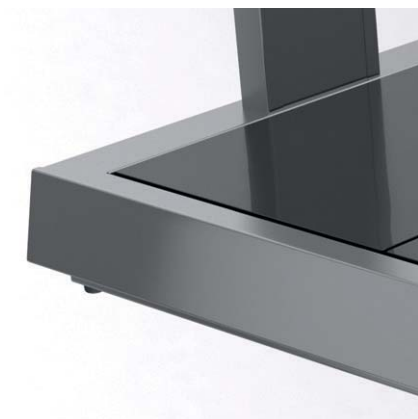


Did you know?

As part of our design and build process all Counterline Food & Drink Displays undergo rigorous testing procedures in real world environment settings.

Part of that process is for a variety of food products to be carefully monitored and tested ensuring optimal temperatures are always maintained ensuring consumer safety and maximum shelf life.

This image shows one of our displays fitted with multiple temperature probes monitoring a variety of food products. Data from these probes are processed and analysed by our design technicians enabling them to make any design modifications to ensure Counterline remains true to its mission statement; **setting the standard.**



Counterline Limited
Randles Road
Knowsley Business Park
Merseyside
L34 9HZ
United Kingdom

tel: + 44 (0)151 548 2211
fax: + 44 (0)151 549 2179
email: enquiries@counterline.co.uk
web: www.counterline.co.uk

CE All images, photographs, text, diagrams, brand names, logos and other artistic or literary works contained in this brochure (Intellectual Property Rights) are protected by copyright, database rights, design rights, registered designs, trade marks or service marks, trade names or know how (whether registered or not) and all rights or forms of protection of a similar nature anywhere in the world including any applications for any of the foregoing.

All Intellectual Property Rights in this brochure or appearing on our website or promotional material are owned by or licensed to Counterline Limited, and may not be reproduced or copied without permission.

Terms & Conditions / Warranty

Full details of Counterline's Terms & Conditions and parts and labour warranty in the UK are available on request.